







Workday Financials
Cost Center Hierarchy Structure
February 22, 2016




Simplify and
standardize processes





Make it easy to get
work done and harder
to make mistakes





Workday@Yale




Establish an accurate,
trusted and timely
reporting environment

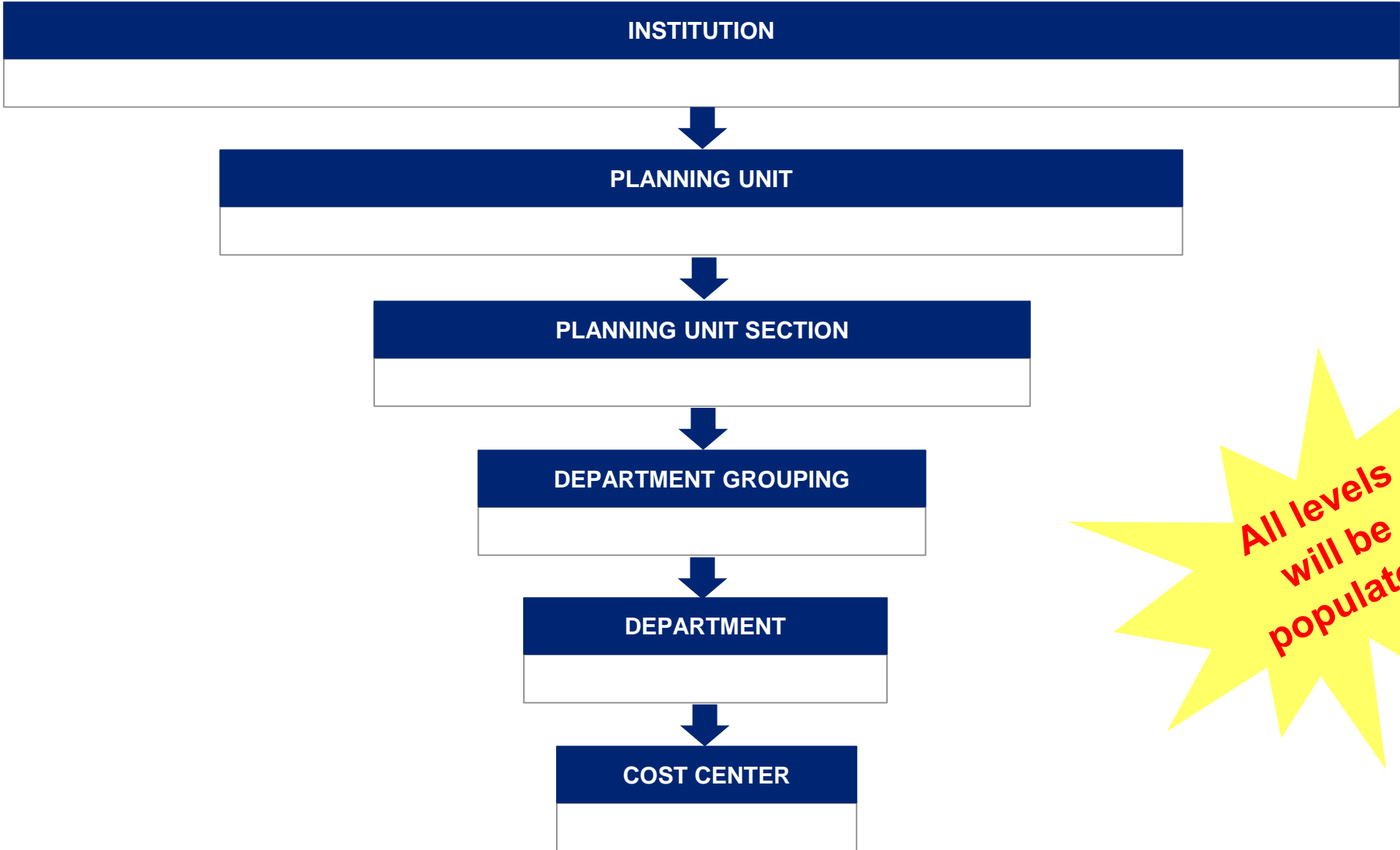


Minimize
administrative
overhead for faculty
and end users

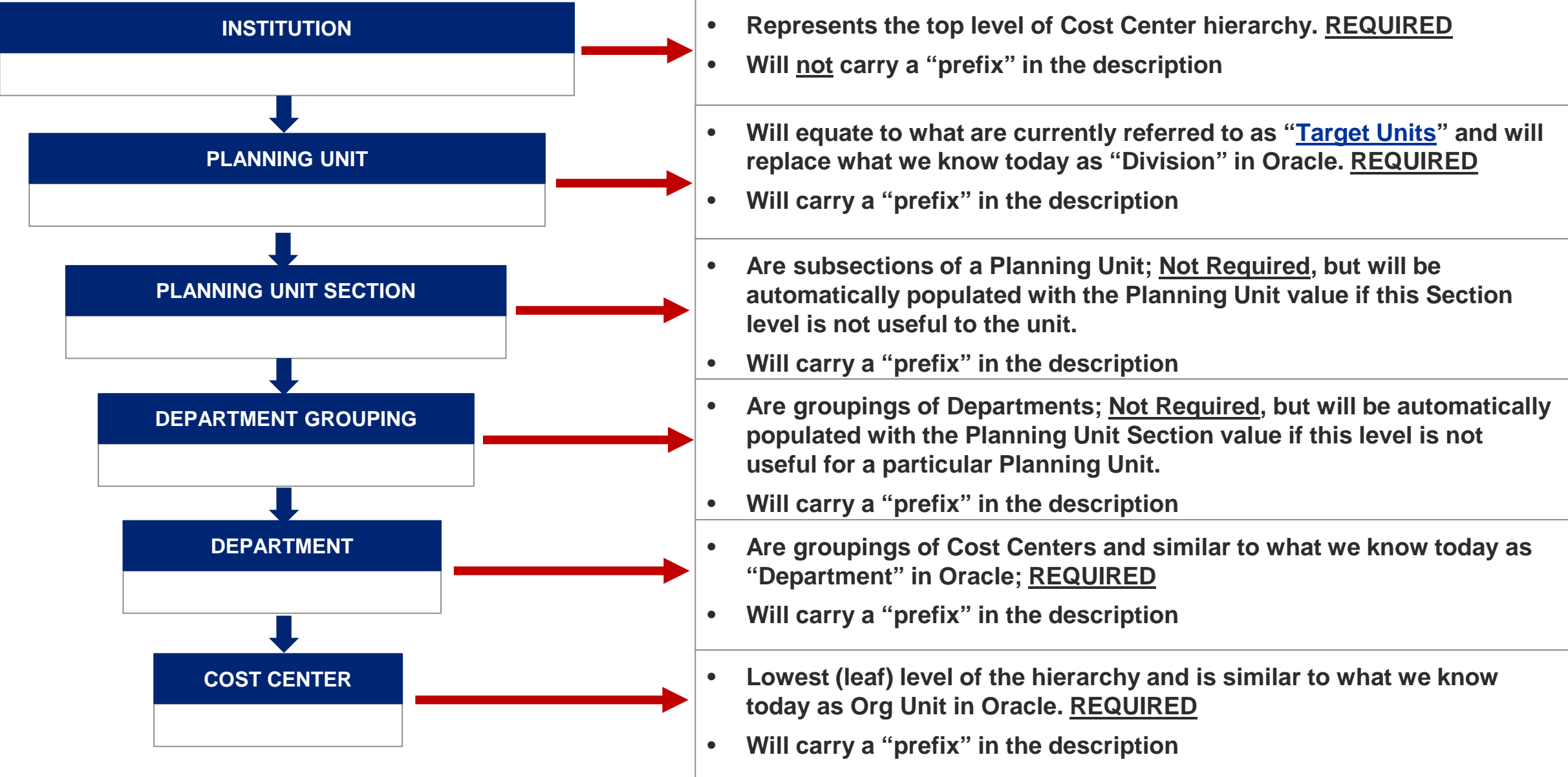


Lower operating costs
and improve
effectiveness





All levels will be populated!



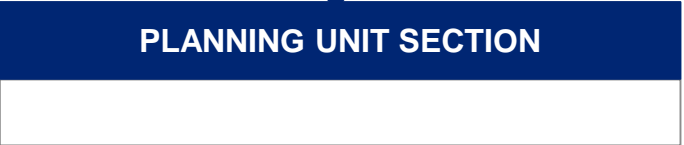
Cost Center Hierarchy Structure – Professional School Example



HIERARCHY CODE	EXAMPLE DESCRIPTION VALUE	DISPLAY
HYCC0001	Yale University Cost Centers	HYCC0001 Yale University Cost Centers



HIERARCHY CODE	EXAMPLE DESCRIPTION VALUE	DISPLAY
HPCC4041	LAW School of Law	HPCC4041 LAW School of Law



HIERARCHY CODE	EXAMPLE DESCRIPTION VALUE	DISPLAY
HSCC3052	LAW School of Law	HSCC3052 LAW School of Law



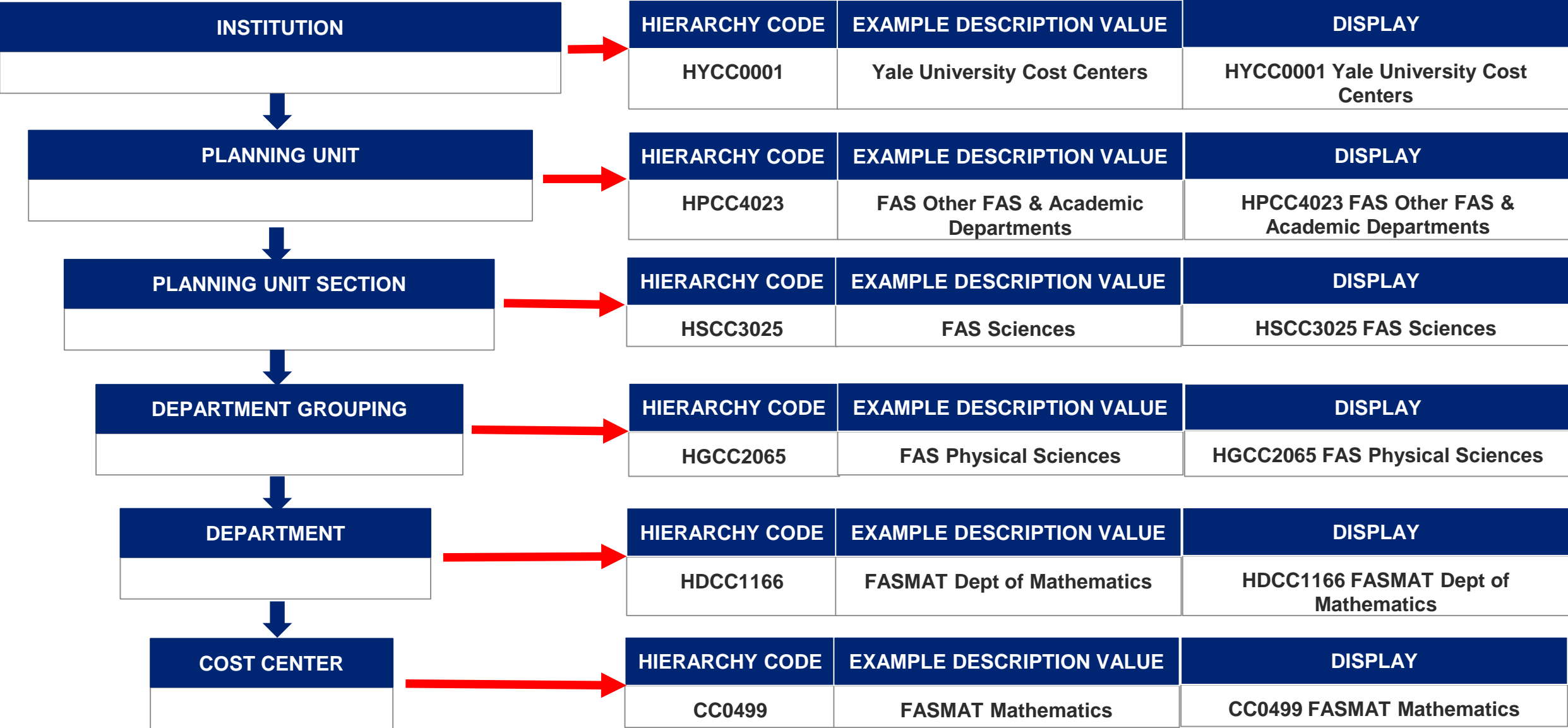
HIERARCHY CODE	EXAMPLE DESCRIPTION VALUE	DISPLAY
HGCC2123	LAW Finance & Administration	HGCC2123 LAW Finance & Administration

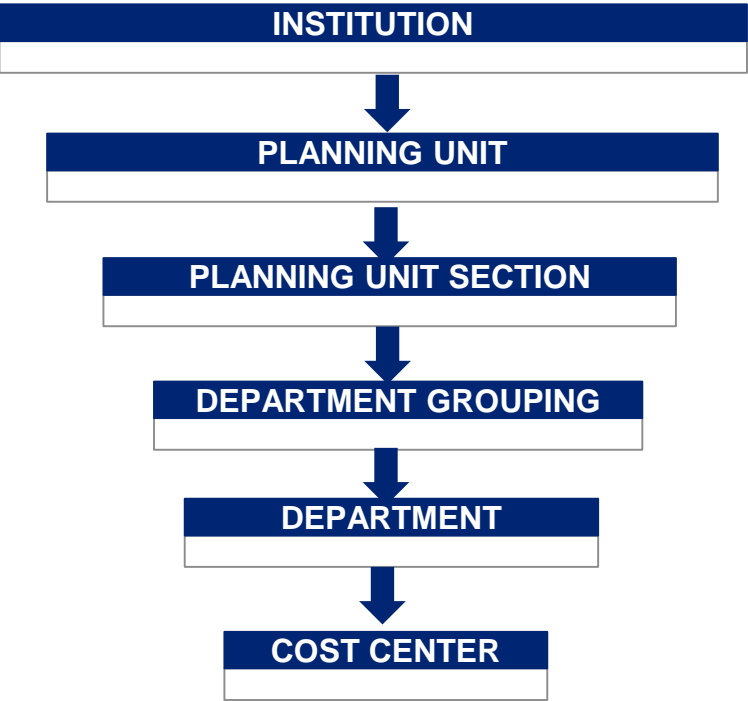


HIERARCHY CODE	EXAMPLE DESCRIPTION VALUE	DISPLAY
HDCC1397	LAWHRE Human Resources Department	HDCC1397 LAWHRE Human Resources Department



HIERARCHY CODE	EXAMPLE DESCRIPTION VALUE	DISPLAY
CC1267	LAWHRE Human Resources	CC1267 LAWHRE Human Resources





There is only one Cost Center hierarchy for now; Others may be added later

Hierarchy Code Naming Convention

- The first digit defines the value as a “Hierarchy”
 - “H” = Hierarchy and is a constant for ALL hierarchies
- The second digit defines the level of each hierarchy
 - Y = Yale Institution
 - P = Planning Unit
 - S = Planning Unit Section
 - G = Department Grouping
 - D = Deartment
 - CC = Cost Center leaf

Hierarchy Description Naming & Prefixes

- Prefixes are used in the bottom five levels of the hierarchy
- A 3-digit prefix is assigned to each Planning Unit, Planning Unit Section & Department Grouping
- A 6-digit prefix is assigned to each Department & Cost Center

Numerals in the Codes

- The first digit in the hierarchy code represents the level in the hierarchy, except for Cost Center.
- The remaining numerals are sequentially and automatically assigned and have no independent meaning